

# RIVKLE® Hydraulic/pneumatic setting tool

## RIVKLE® P2007 pneumatic/hydraulic setting tool

Versatile and flexible tool with good ergonomic characteristics.

This force-controlled setting tool is used to set RIVKLE® Standard blind rivet nuts made of aluminium (M5–M12), steel (M4–M10) and stainless steel (M3–M8).

### Delivery scope:

- Basic tool
- Operating instructions
- Practical case for storage and transport

Threaded mandrels and anvils are not included in the delivery scope and must be ordered separately.

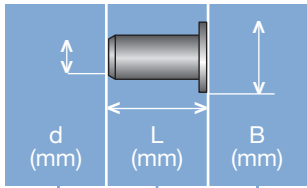
Technical information can be found on the last page.



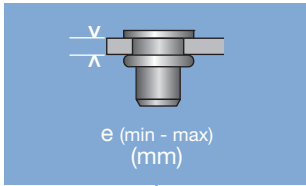
Diameter (d)	Article number	Weight g
M 4 - M 10	23615601000	2200

All technical data refer to the measure mm



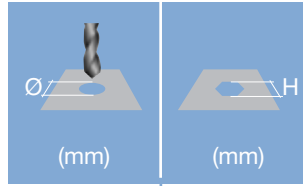


Head diameter  
Overall length  
Thread size



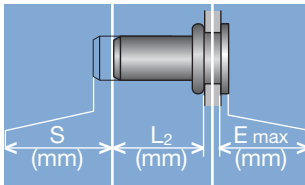
**Grip range**

Defines the range of total thickness of the customers part (even if it consists of more than one layer)



**Hole geometry**

If round → diameter  
If hexagonal → width across flats



**Head projection after setting**

Variable according to the application (setting load, material substrate, etc.)

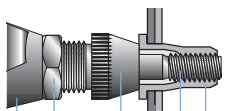
**Blind side projection after installation**

Defines the clearance needed on the blind side (cannot be used for quality control)

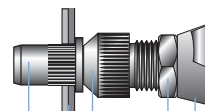
**Setting stroke**

Difference of total length before and after installation

**RIVKLE® Nut**



**RIVKLE® Stud**



- RIVKLE®
- Mandrel\*
- Customers part
- Anvil\*
- Counter nut
- Setting tool

\*in accordance to chosen RIVKLE®\*

All technical data refer to the measure mm

